



imaging starts with light



LED lighting, controller and accessories for industrial machine vision

Made in Germany • Expert Advice • Fair prices • Short delivery times



Controller and Accessories



CTR-50 LED-Controller

Current controlled for precise brightness settings.



CTR-51 LED-Controller

Allows very short flash and response times in the μ s range.



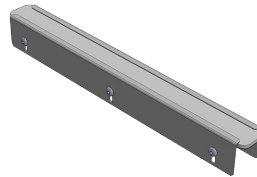
CTR-52 LED-Controller

Controls up to four independent LED channels via current or voltage settings.



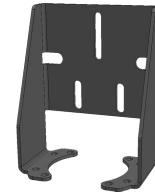
Connection Cable

Different lengths, plugs and camera types.



Optical Filters and matching holders

Easy adaption of light characteristics with optical foils.



Mounts

For various MBJ illuminations and cameras.



Visit us

www.mbj-imaging.com

FLEX LIGHT

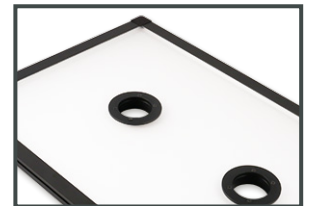
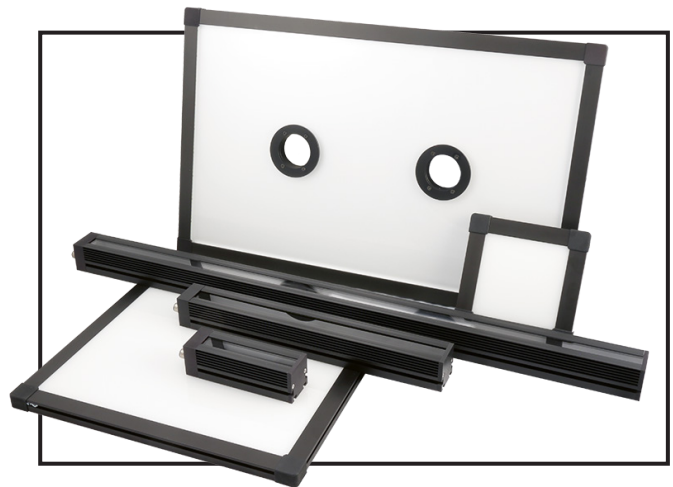
Flex Series

The right LED lighting for your project

You specify the size and beam characteristics: choose from Bar-, Top- or Backlight and scale the sizes in 100mm steps up to 1600mm (Barlight) or 800x1000mm (Top-/Backlight). Profit from our standard wavelength portfolio.

Determine the number of camera openings and their position for the Toplight - just as you need it.

Adapt the light characteristic: For the Flex Bar, we offer optical foils or lenses. The Barlight can thus be used as simple line light, diffuse, polarized or collimated.



Standard Series

Choose from 6 standard colours to find the right wavelength for your project. All lights are available with the versatile internal controller that has 4 operating modes. Alternatively, the lights are also available without the internal controller.



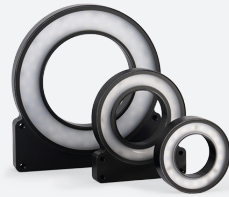
DBL-Series Backlight

Suitable for inspection and measurement of object contours.



DTL-Series Toplight

Diffuse Toplight with lens hole for bright field applications.



SRL-Series Ringlight

Direct light emission with various diameters.



SBL-Series Barlight

Direct light emission for versatile application.



WBL Series Wide Barlight

For larger objects and homogeneous illumination.



HDF-Series Horizontal Ringlight

Darkfield inspection of contours or surface defects.



COX-Series Coaxiallight

Uniform illumination from camera axis.



SDL-Series Domelight

For shadowless illumination of highly reflective objects.

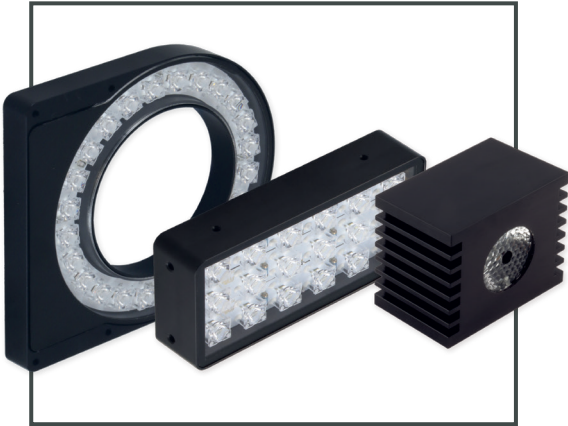
High power Series

Light intense applications

Profit from our High Power Series for light intense applications or for larger distances.

The special designed high power LEDs use approximately 1.5 times more power. In addition small lenses bundle the light to an aperture angle of approx. 20°. This results in a brightness that is approx. 5 times higher vs. the Standard Series.

The Series consists of Wide Barlights, Ringlights and Spotlights.



HIGH POWER

MBJ Imaging GmbH

The specialist for LED lighting



Made in Germany

We develop and manufacture all our lightings exclusively in our production facility in Ahrensburg, Germany.



Expert Advice

Take advantage of our more than 20 year long expertise knowledge of automated inspection systems and LED lighting.



Fair prices

For your benefit we consequently challenge us to develop high quality products while keeping our prices very attractive.



Short delivery times

We promise to deliver you all our standard illuminations within just two weeks time.



ISO 9001-2015

We live our quality management system to continuously improve our products and services. We are certified by TÜV Nord since 2020.



MBJ Imaging GmbH
Jochim-Klindt-Strasse 7
D-22926 Ahrensburg

+49 410 277 890 31
sales@mbj-imaging.com
www.mbj-imaging.com

